



Vlaanderen  
is supercomputing

# VSC Updates

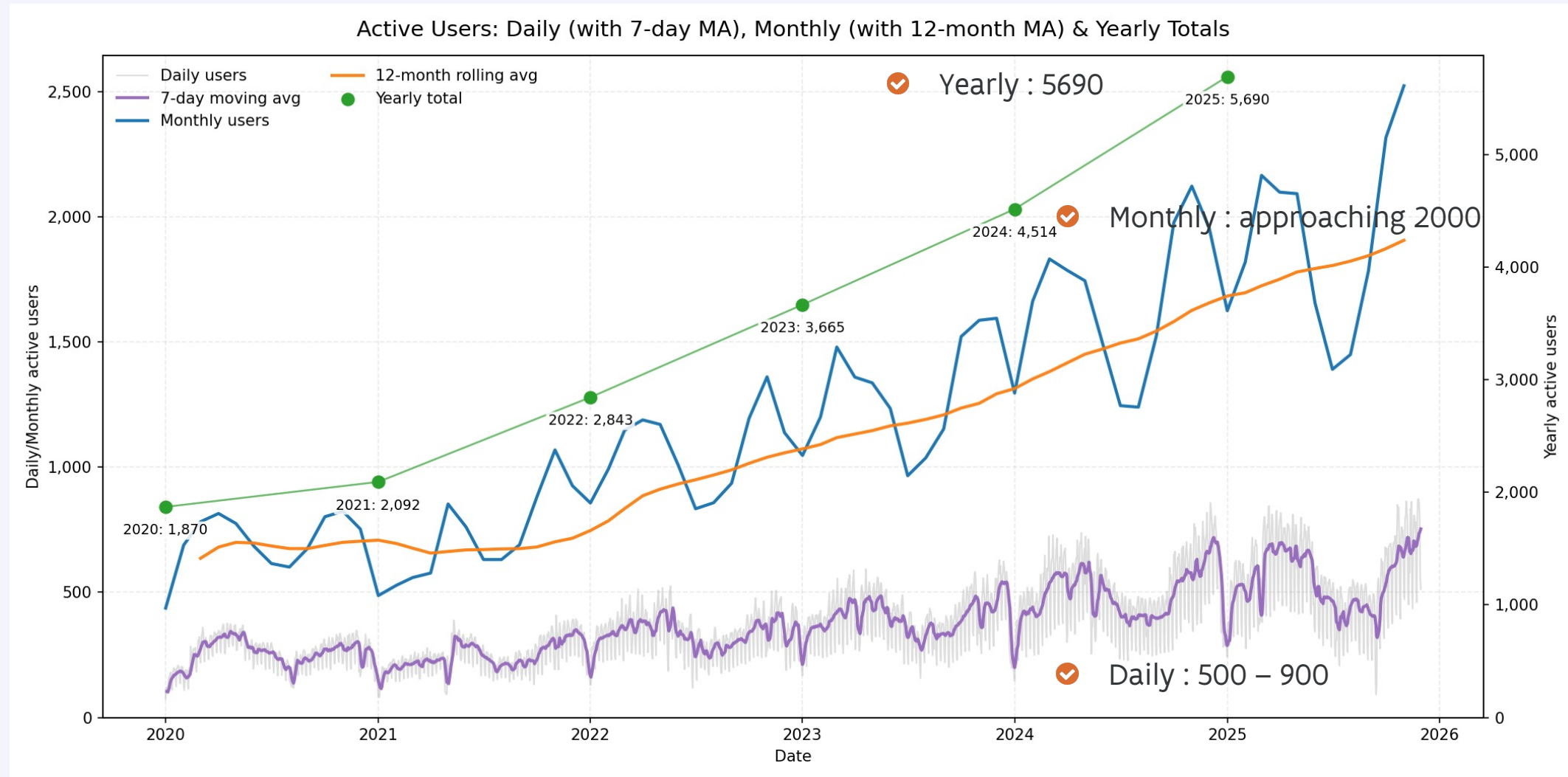
Ward Poelmans – VSC / VUB

Jan Ooghe – VSC / KU Leuven

# Overview

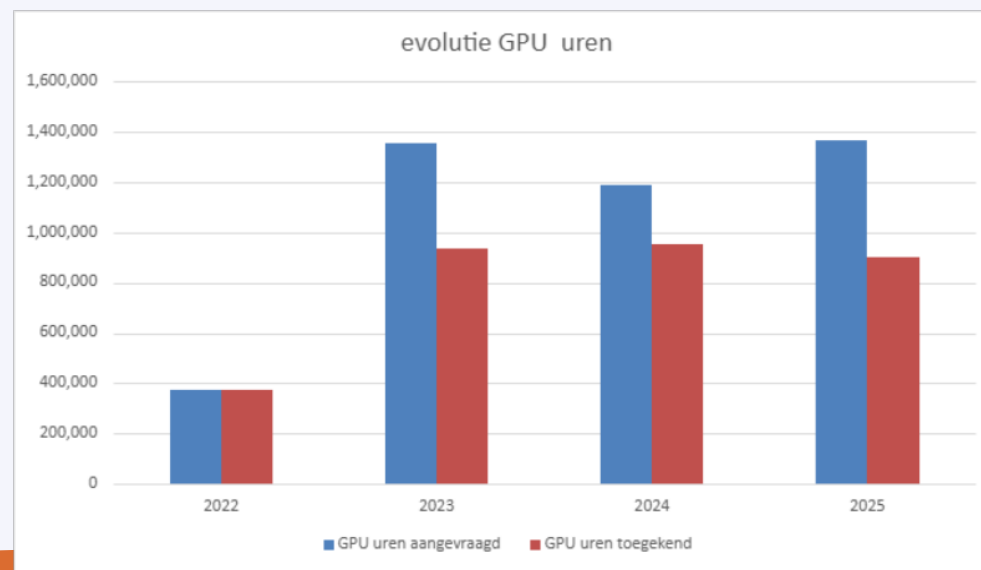
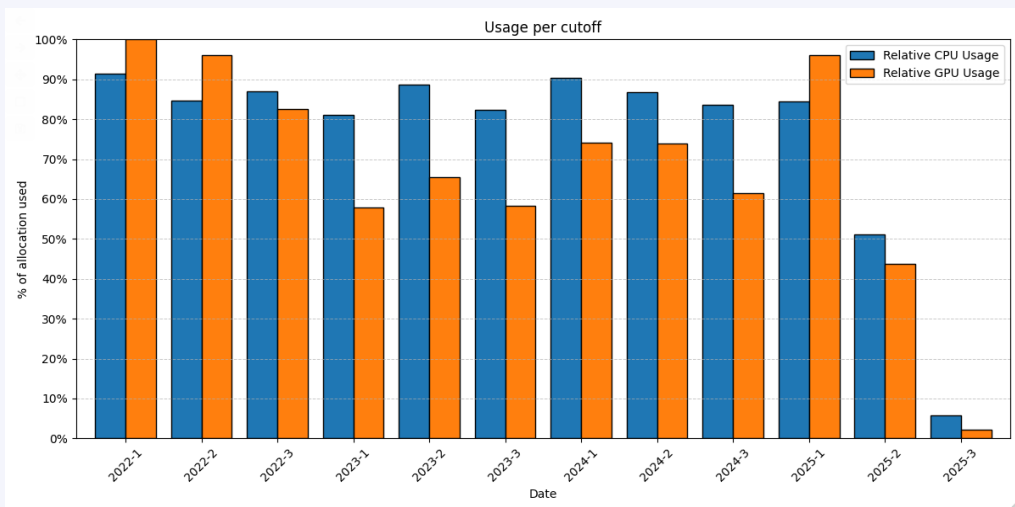
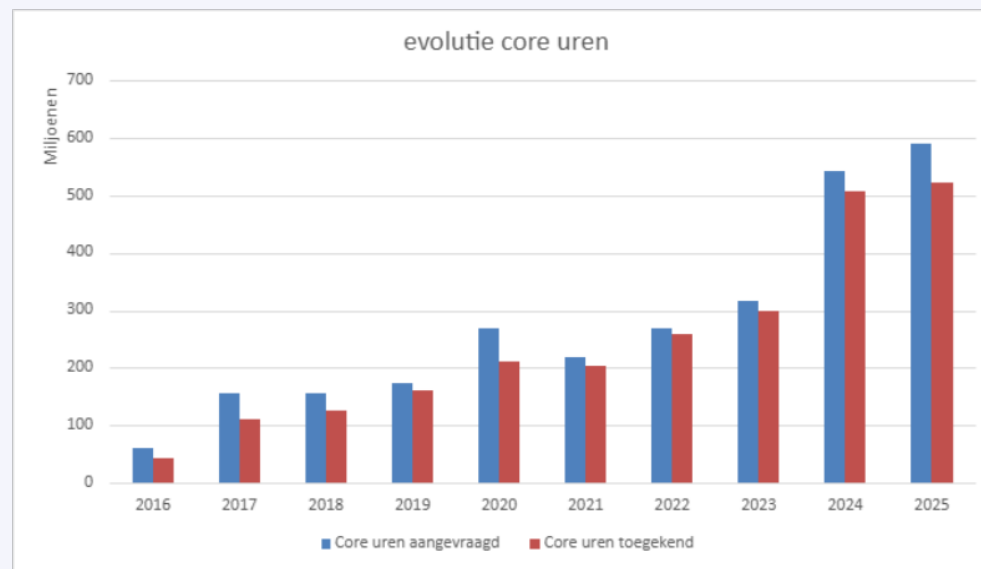
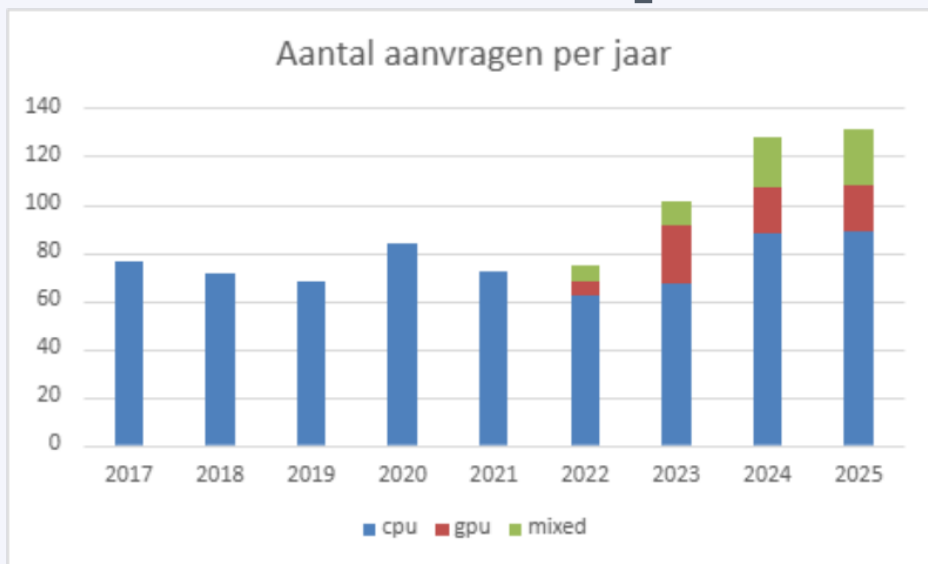
- ✓ VSC in a few numbers
- ✓ New infrastructure
- ✓ Some highlights
- ✓ Survey 2024 in review

# Evolution in number of users



✓ Reminder VSC started 16 years ago

# Tier-1 Compute

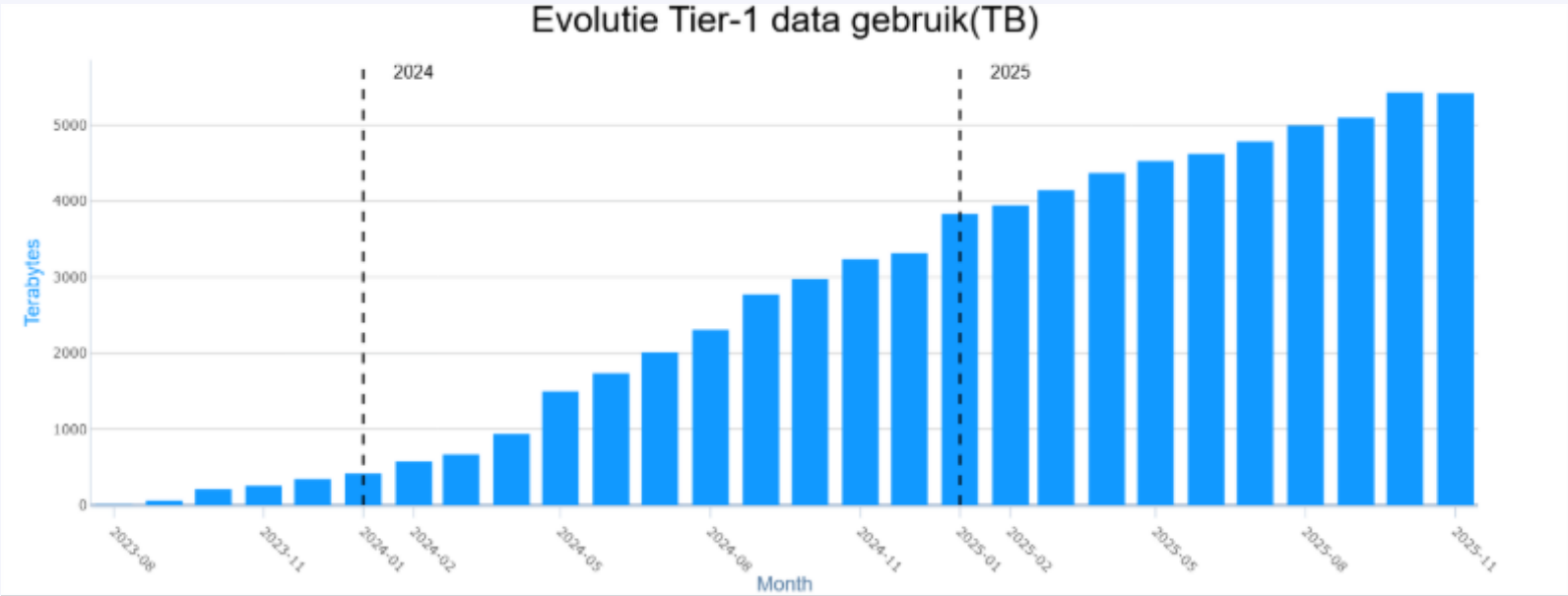


# Tier-1 Compute Industry

- ✓ 21 exploratory grants
- ✓ From this 8 additional regular grants
- ✓ 16 regular grants continued, total of 41 active regular grants

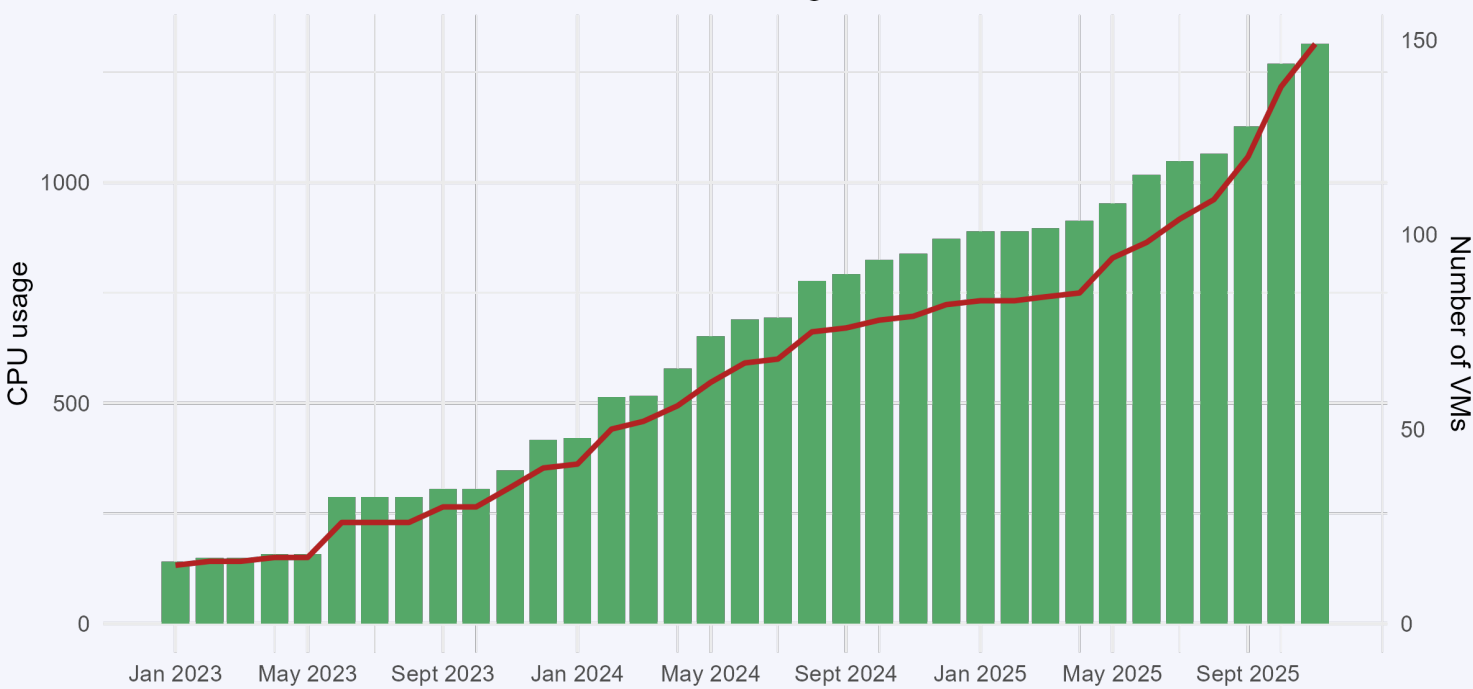
# Tier-1 Data

	2023			2024			2025		
Proposals	starting	regular	collab	starting	regular	collab	starting	regular	collab
Number	1	4	1	3	6	3	10	9	
Quota requested (TB)		730	2000	15	2670	7015	50	796	

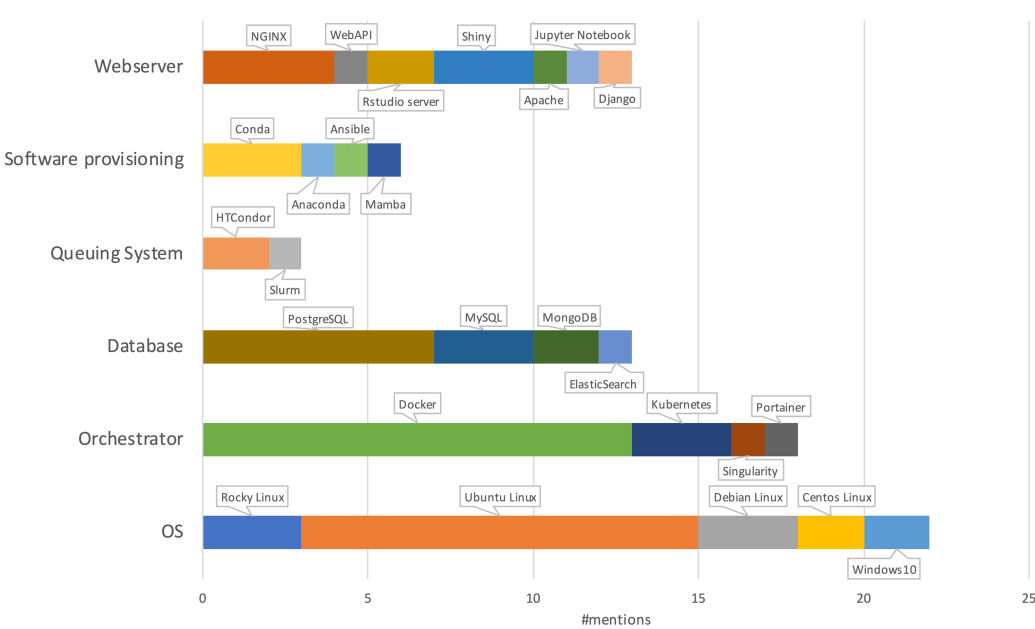


# Tier-1 Cloud

Tier-1 Cloud CPU usage since 2023

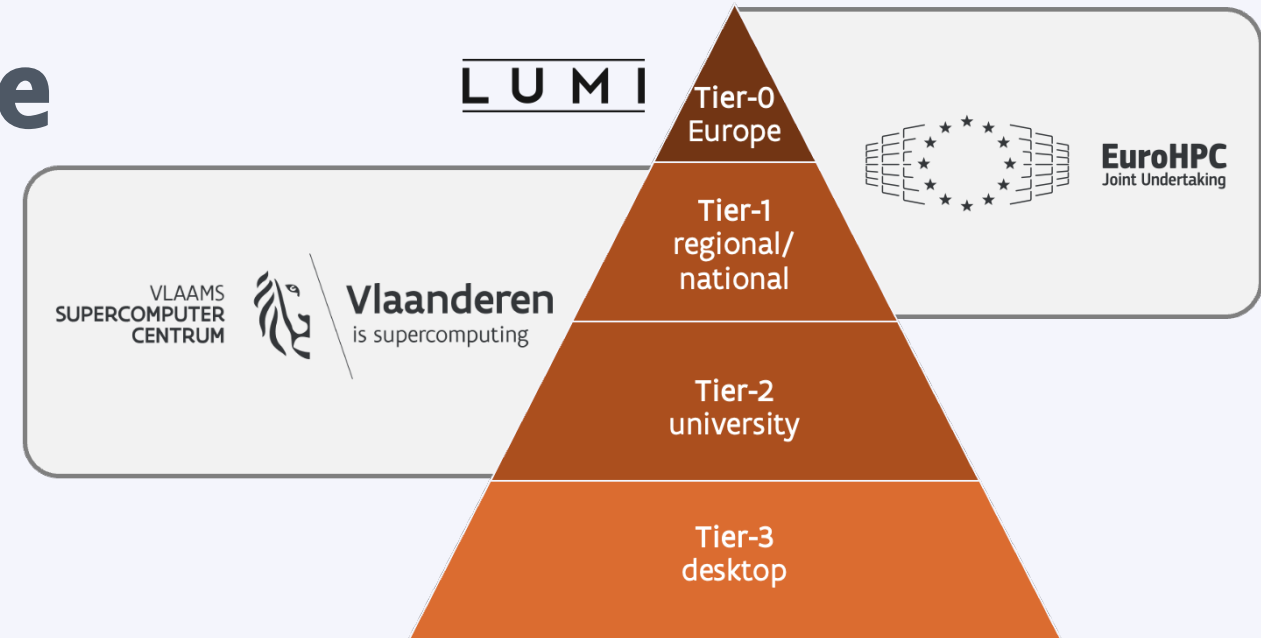


Common tools on Tier-1 Cloud

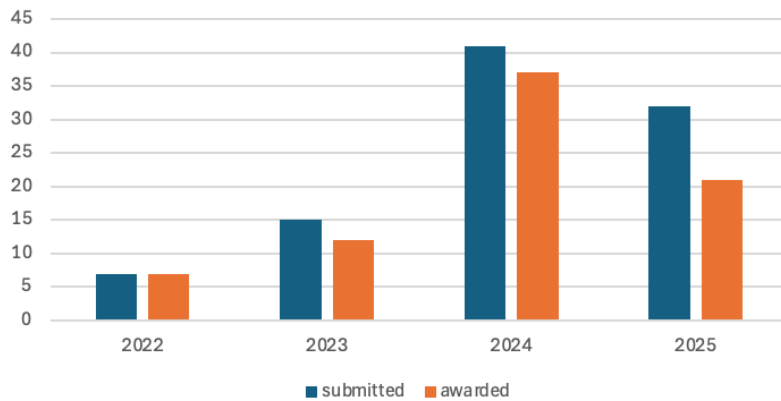


	#projects	#starting grants	#industry projects	#collaboration grants
2022	5		1	
2023	2	7		
2024	9	7	1	1
2025	2	10	1	

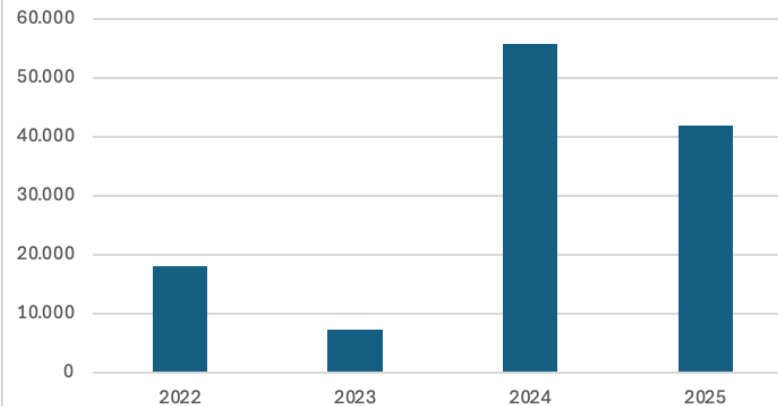
# Flanders' LUMI usage



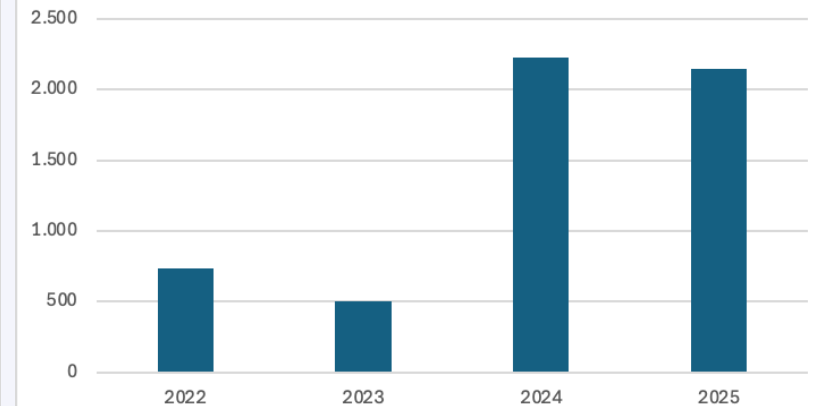
Number of projects



Number of awarded CPU kcore.h



Number of awarded GPU k.h



Remark: not all data for 2025 is processed yet.



# Current status

Tier-2	UAntwerpen	VUB	UGent	KU Leuven/ UHasselt
# cores	17 436	4 808	25 264	27 300
# GPU devices	16	28	108	125
Cluster filesystems	0.6 PB	0.7 PB	2.7 PB	4.5 PB

Tier-1	Hortense	...		
# cores	129 252			
# GPU devices	160			
Cluster filesystems	5.4 PB			

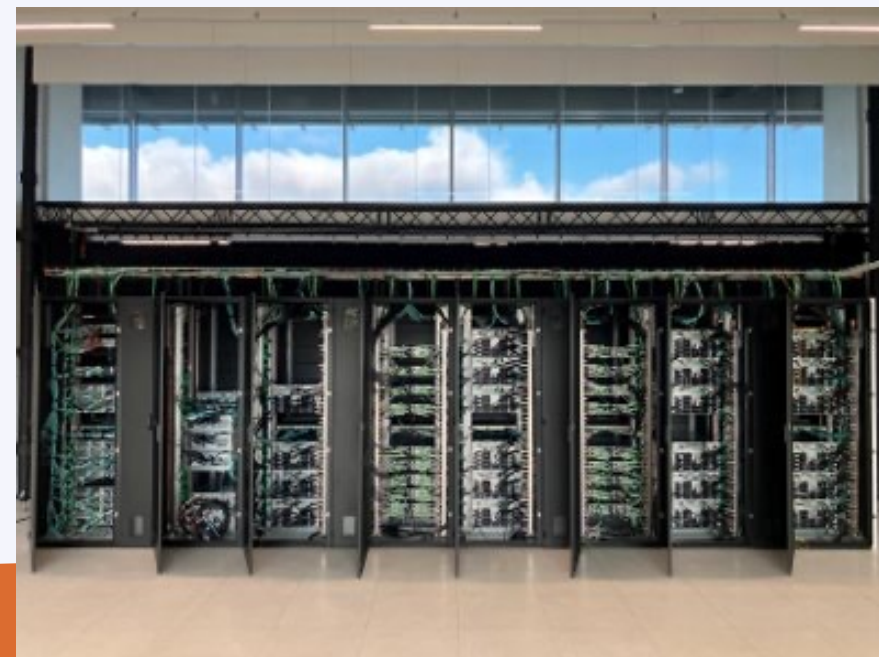


# Welcome Sofia!

Located in the Nexus datacenter in the Research Park Zellik, managed by VUB.

Currently the testing process is ongoing

Investment of € 8,6 million





# Welcome Sofia!

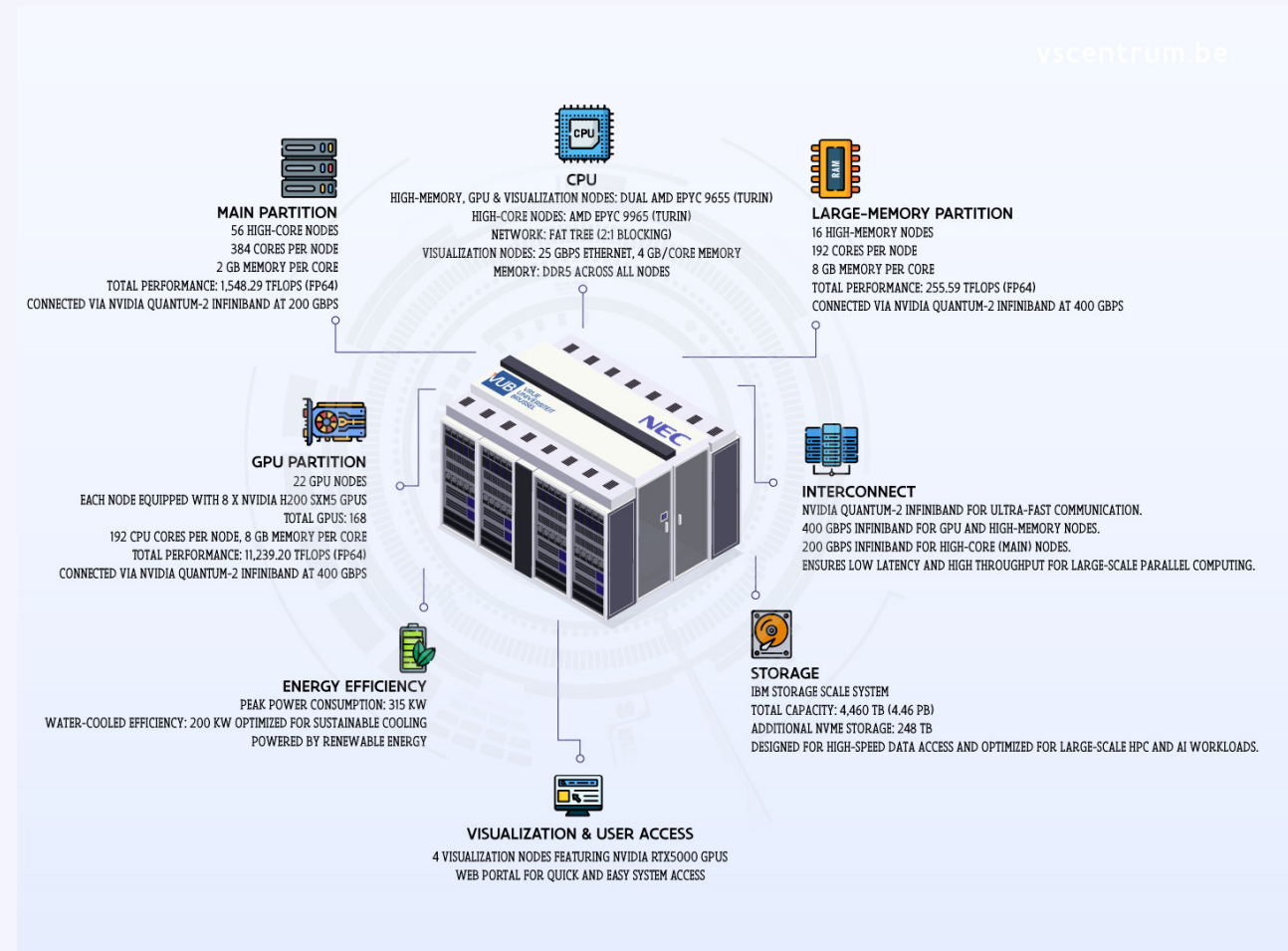
Focus on Artificial Intelligence: 176 H200's GPU  
21 504 CPU cores with 2 GB of memory/core  
3072 CPU cores with 8 GB of memory/core

Infiniband interconnected (200/400 Gbps)

Testing period: March-April

If you have crazy ideas that could keep 176 GPUs busy, contact us!

**sofia**  
SUPERCOMPUTER





# Other new infrastructure @ VSC

- ✓ New Tier-2 operations @ UGent
  - ✓ Litleo (16 H100 GPU's)
- ✓ New Tier-2 @ VUB
  - ✓ 20+4 AMD Turin (6144 cores): 4 with 1,5 TB memory
  - ✓ 10 H200 GPU's in pilot
- ✓ New Tier-2 coming @ KU Leuven
  - ✓ 50 Intel Granite Rapids (9600 cores)
  - ✓ 3 with 8xNVIDIA B200
  - ✓ New 5.8 PB parallel filesystem
- ✓ Tender procedure ongoing @ UAntwerp

# Tier-2 Highlight

- ✓ Open OnDemand Portal is becoming standard access to our systems
  - All sites have a portal:
    - KU Leuven: <https://ondemand.hpc.kuleuven.be/>
    - UGent: <https://login.hpc.ugent.be/>
    - VUB: <https://portal.hpc.vub.be/>
    - U Antwerpen: <https://portal.hpc.uantwerpen.be>
  - New Apps have been added
  - More can be added: ask your Tier-2 support

# Tier-2 Highlight

KU Leuven OnDemand Apps Files Jobs Clusters Interactive Apps My Interactive Sessions

**KU LEUVEN**

Pinned Apps A

- Active Jobs System Installed App
- ANSYS FLUENT System Installed App
- Interactive Shell System Installed App

Servers

- Desktop
- Fluent
- Gnuplot
- Interactive Shell
- JupyterLab
- MATLAB
- NVIDIA RAPIDS
- ParaView
- PyCharm
- RStudio Server
- TensorBoard
- Visual Studio Code

Visual Studio Code System Installed App

HPC UGent Files Jobs Clusters Interactive Apps

VLAAMS SUPERCOMPUTER CENTRUM

OnDemand provides a

## Status

HORTENSE HPC in

cluster / partition full r

dodrio

Servers

- Bioimage ANalysis Desktop
- Cluster Desktop
- Neurodesk

Servers

- Jupyter Lab
- Jupyter Notebook
- RStudio server
- Shell (tmux)
- VS Code Tunnel

Testing

- Cluster desktop v2
- Code Server
- Neurodesk v2
- Transcribe

HPC UGent Files Jobs Clusters Interactive Apps

GHENT UNIVERSITY

OnDemand provides a

## Status

STEVIN HPC-UGent

cluster	full nodes	free nodes
joltik	4	
doduo	68	
accelgor	8	
donphan	0	
gallade	7	
shinx	14	
littleo	8	

Servers

- Bioimage ANalysis Desktop
- Cluster Desktop
- Neurodesk

Servers

- Jupyter Lab
- Jupyter Notebook
- RStudio server
- Shell (tmux)
- VS Code Tunnel

Testing

- Cluster desktop v2
- Code Server
- Neurodesk v2
- Transcribe

VUB VUB OnDemand Integrated, single access point for all VUB PC resources

Pinned Apps

- Active Jobs
- Home Directory

Recently Launched

- VS Code Tunnel

Servers

- Interactive Shell
- JupyterLab
- MATLAB
- RStudio
- TensorBoard
- VS Code Server
- VS Code Tunnel

Testing

- Desktop\_v2

Visualization

- 3D Slicer
- GaussView
- ParaView

Login Shell Access

Files Jobs Clusters Apps

University of Antwerp

## Latest news

### Upcoming trainings

- Introduction to Linux**  
October 15 and 16, 9.30-13.30 h (CMI G.025 (15th), CMI G.026 (16th))
- HPC@UAntwerp introduction**  
October 22 and 23, 9.30-13.30 h (CMI G.025 (22nd), CMI G.026 (23rd))
- Supercomputers for starters**  
October 29 and 30, 9.30-13.30 h (CMI G.025 (29th), CMI G.026 (30th))

[More information](#) / [Register here](#)

Gateway Apps

- VS Code Tunnel

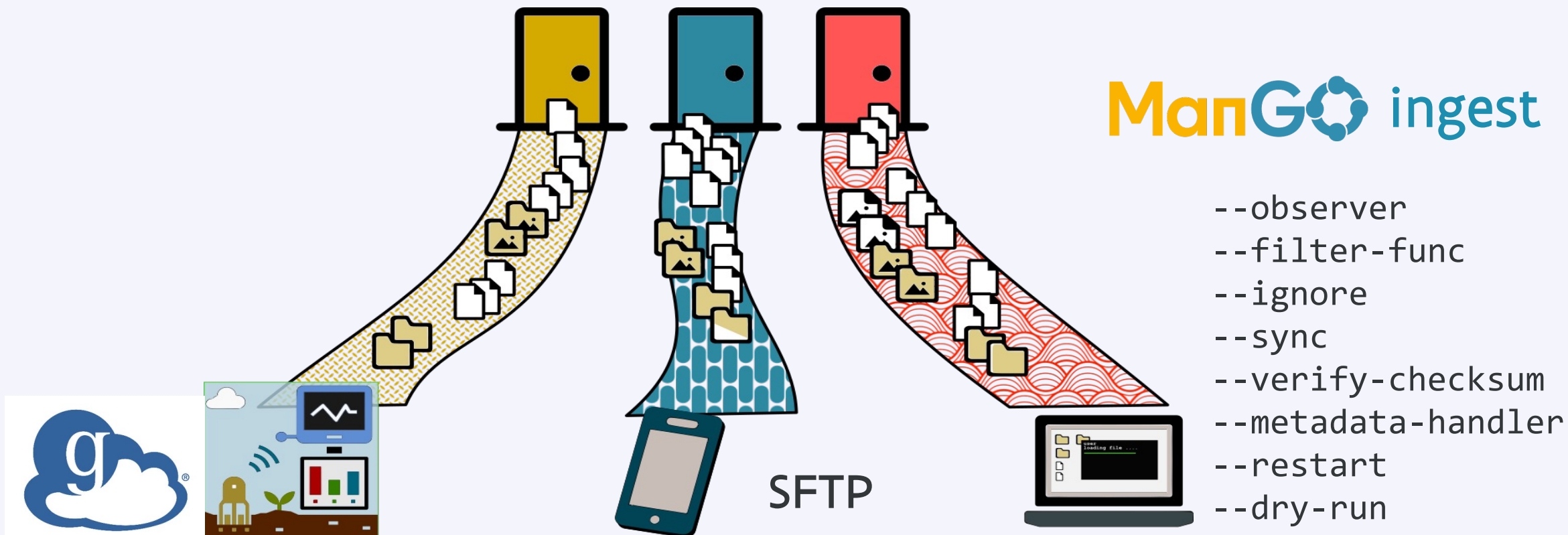
Servers

- Interactive Shell
- JupyterLab
- RStudio
- VS Code Server



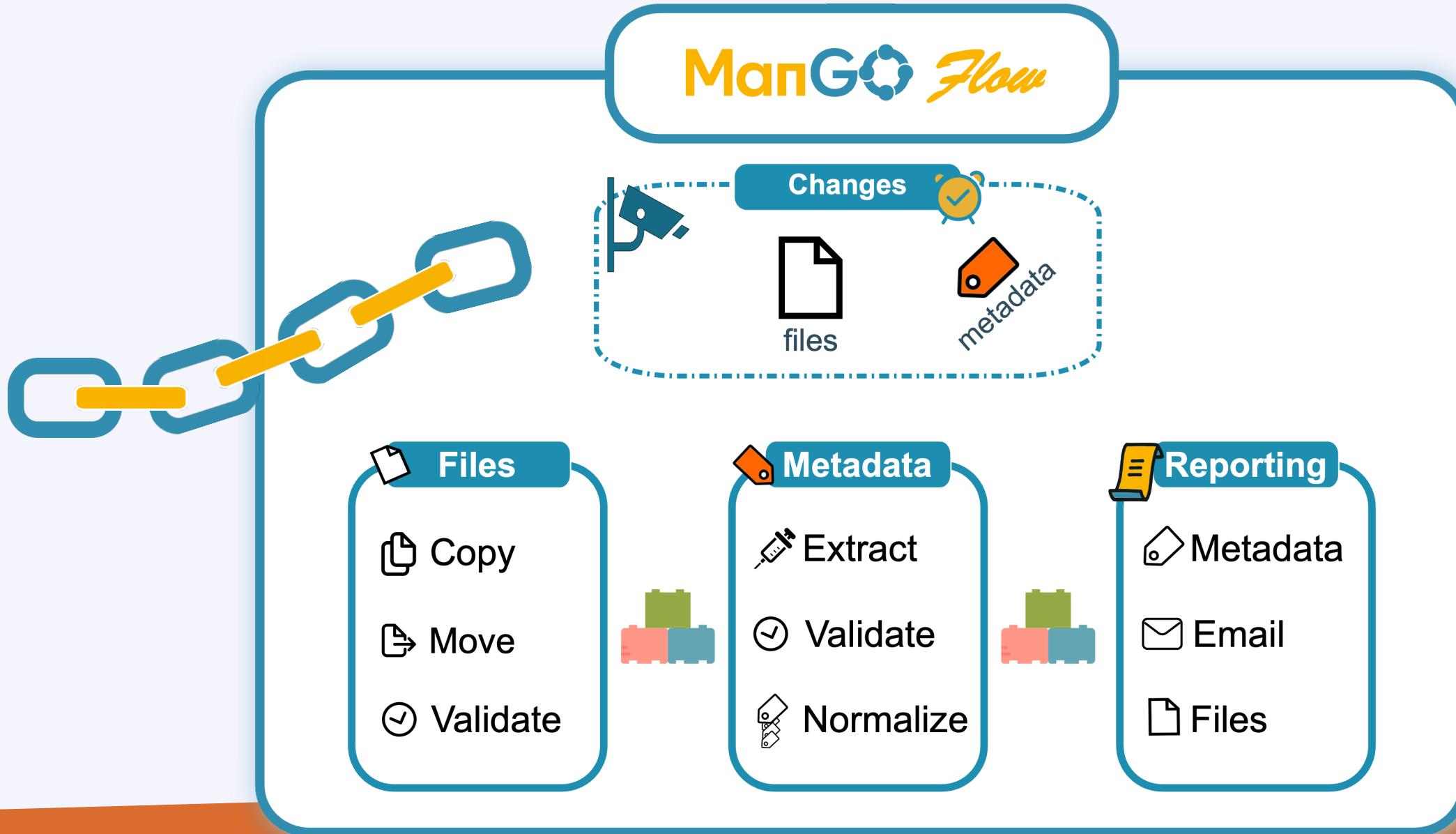
# Tier-1 Data Highlight - Automatic ingest

## Tier-1 Data



# Server-side automation

iRODS® rules



# Challenges

- ✓ Data management is becoming more crucial than ever
- ✓ Tier-1 and Tier-2 PFS systems are around maximum capacity
- ✓ Storage is not getting cheaper
  - don't expect massive storage growth for the HPC systems
- ✓ Experiments output dataset volume keeps increasing in rate and volume

# Challenges

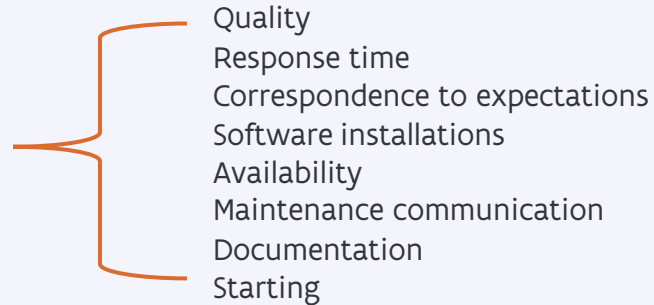
- ✓ Security is more important than ever
- ✓ Universities are involved in NIS2 (Network and Information Systems Directive 2)
- ✓ MFA-enforcement is important
- ✓ We keep user-friendliness in mind, but some changes have an impact that we can't avoid

# **VSC user survey 2024**

Results and actions

# VSC User Survey Results 2024

- Main topics
  - Tier-1 services
  - Tier-2 services
  - Training
- Improvement of the survey
  - Explicit request for comments per service
  - Question about how difficult it is to start with the service



# VSC User Survey Results 2024

- Overall good response
- 413 completed surveys (4514 users in 2024)
  - Higher than 2023 (+11%)

# VSC User Survey Results 2024

- Respondents from all organisations

<b>University association</b>	<b>88%</b>
KU Leuven	31%
UGent	31%
VUB	13%
UAntwerpen	9%
Multiple Universities	3%
UHasselt	2%
<b>Private</b>	<b>5%</b>
Private company	5%
<b>SOC</b>	<b>3%</b>
VIB	2%
VITO	1%
imec	0%
FlandersMake	0%
<b>Other RI</b>	<b>3%</b>
Other Research Institute	3%
<b>Public</b>	<b>1%</b>
Public Sector organization	1%

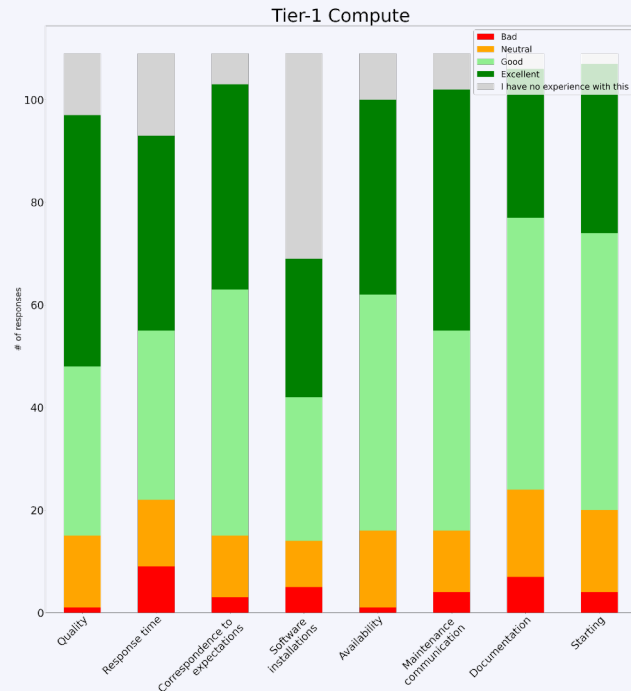
## Survey of 2024 versus 2023

2024 vs 2023	Tier -1			Tier-2			
	Compute	Cloud	Data	UAntwerpen	VUB	UGent	KU Leuven
Quality	-1%	-10%	13%	19%	5%	7%	12%
Response time	1%	0%	8%	16%	15%	3%	12%
Correspondence to expectations	7%	-6%	16%	7%	-3%	7%	9%
Software installations	19%	-13%	10%	9%	4%	6%	2%
Availability	11%	-22%	2%	14%	7%	2%	13%
Maintenance communication	-1%	0%	4%	9%	6%	-10%	8%
Documentation	7%	6%	6%	4%	8%	-8%	15%

To monitor evolutions,  
we need your yearly response to the same questions



# VSC User Survey Results 2024 – Tier-1



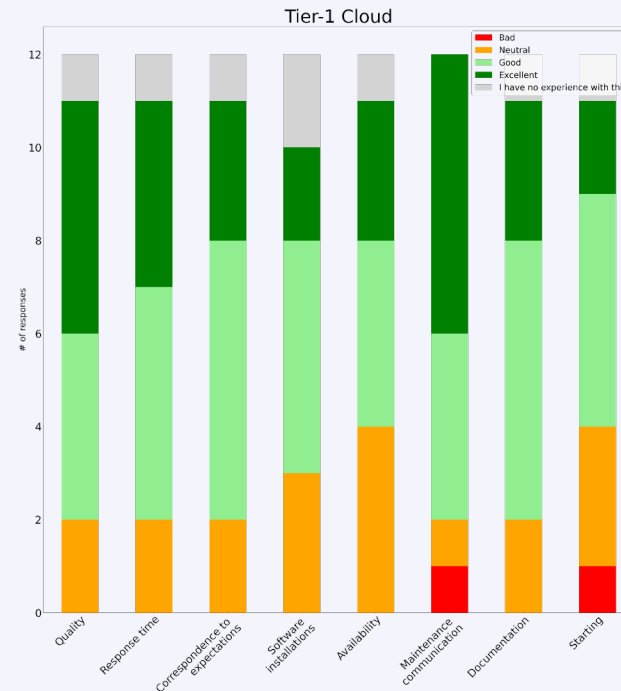
112 (-9%)

Response time software installations

More GPU nodes

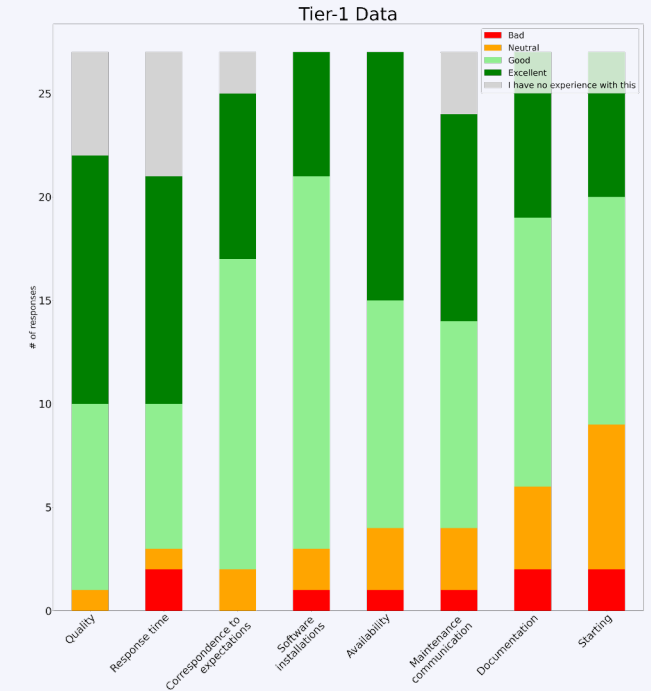
More examples and workflows

More support staff / faster response



12 (-71%)

Larger VM flavors



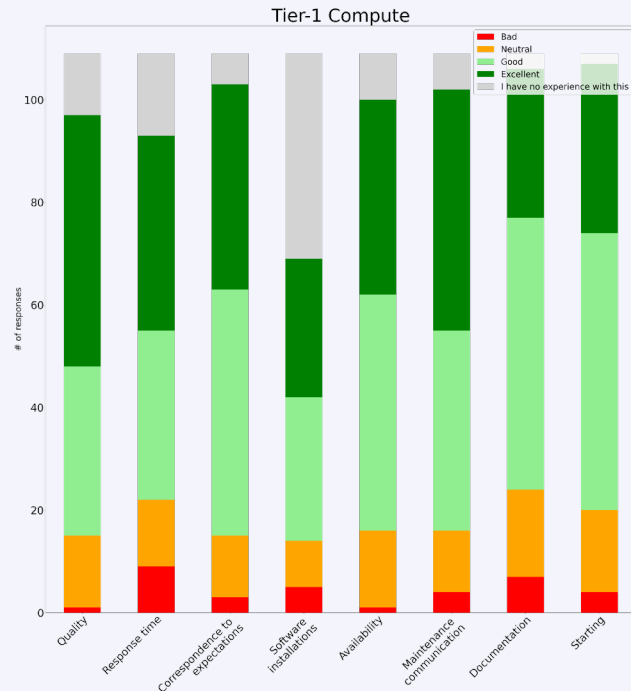
32 (-49%)

Globus documentation hard to find

Mounting solutions

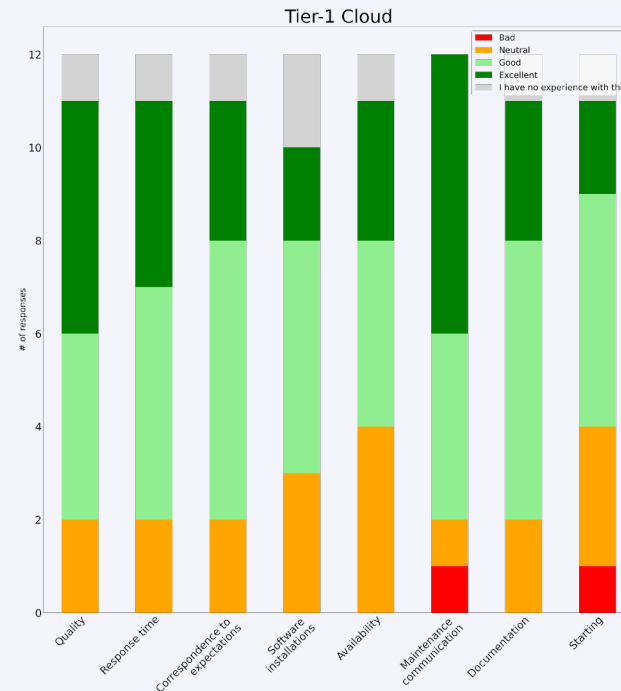
Data transfer rate

# VSC User Survey Results 2024 – Tier-1



New procedure for software installations -> reduction of requests

Status quo support staff

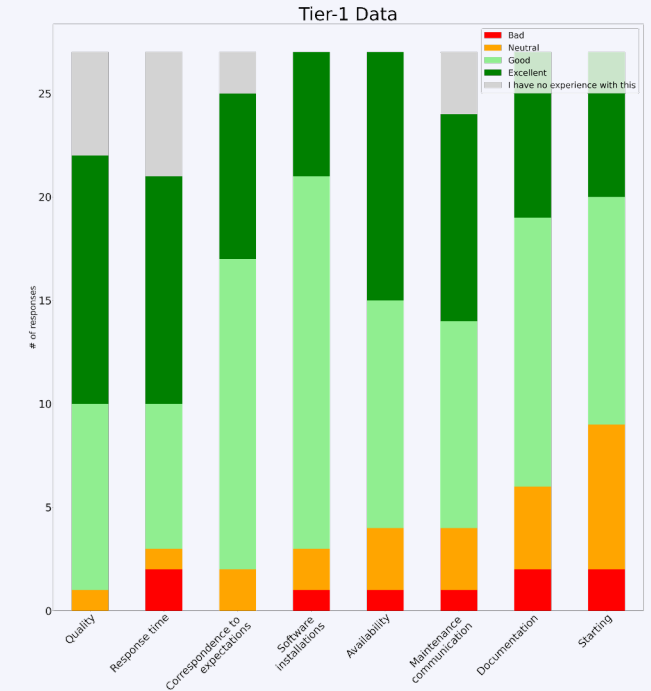


Largest VM sizes are

CPUv1.4xlarge

GPUv3.2xlarge

UP Sv1.3xlarge

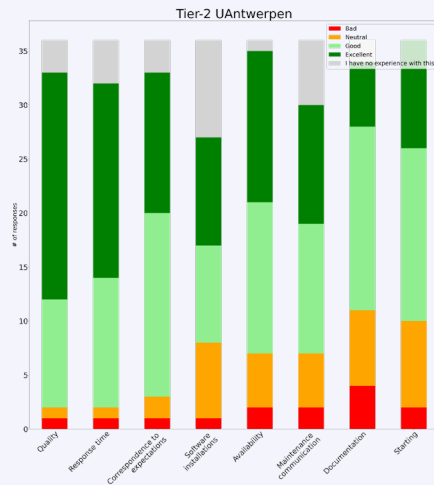


Globus documentation prominent

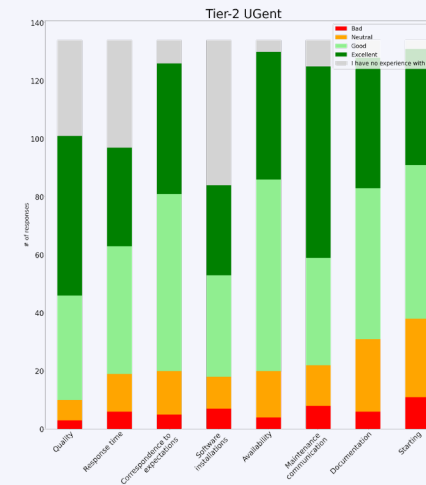
Mount possible for specific cases

Hardware changes ongoing to improve Globus – Tier-1 data transfer rate

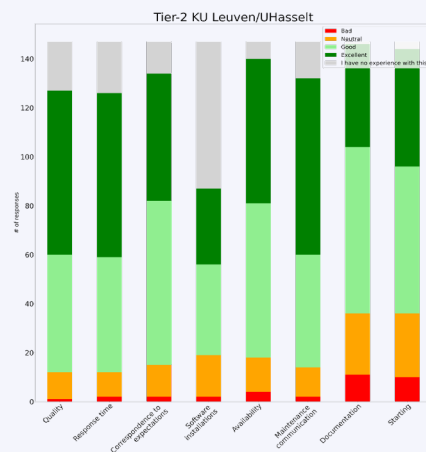
# VSC User Survey Results 2024 – Tier-2



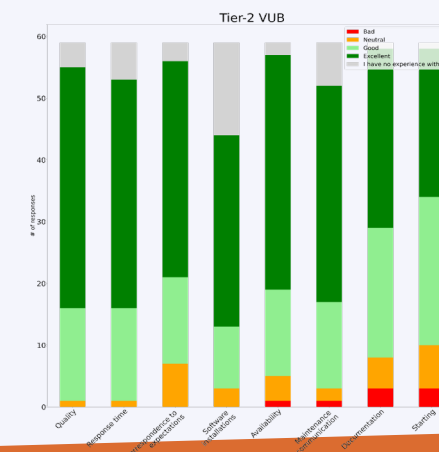
36 (-10%)  
 Conda support  
 Provide web portal  
 Slow login nodes  
 More basic intro courses



131 (+11%)  
 More GPUs  
 Simpler documentation  
 Best practices  
 Faster response time for software installation  
 More support staff / swifter response

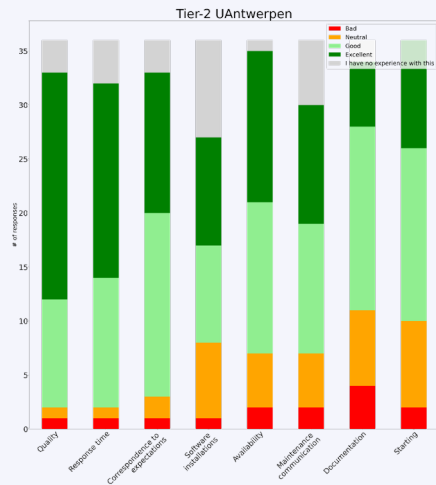


147 (+27%)  
 More GPU's  
 Performance login nodes  
 Documentation  
 more examples, job scripts



58 (=)  
 More CPU's & GPU's  
 Queueing times  
 Provide web portal

# VSC User Survey Results 2024 – Tier-2



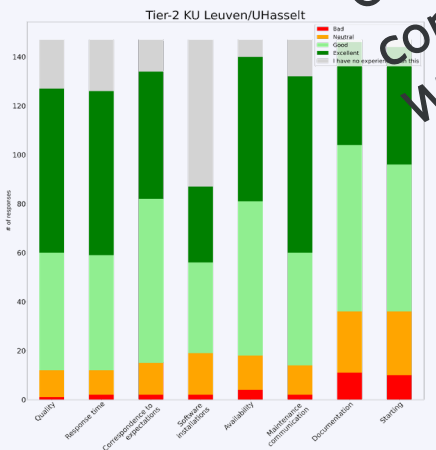
Intro course adapted, more hands-on  
Slow login nodes resolved  
Alternatives for conda environments



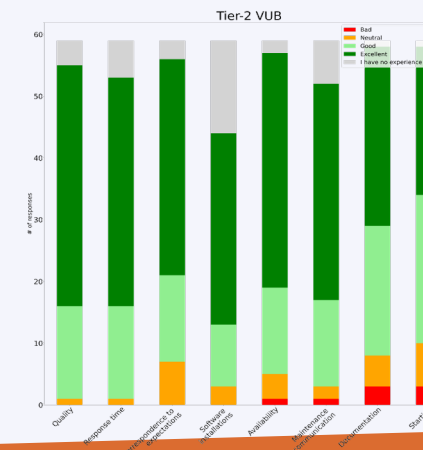
New GPU cluster tileo

New procedure for software installations -> reduction of requests

Reallocation of Tier2 helpdesk tasks



1000 were added  
L1 cache on login  
Monitoring NFS filesystem  
Service catalog restructured  
Credit calculator  
Additional Slurm examples on hpc-intro GitHub repository



New CPU nodes added  
New GPU nodes in pilot

New nodes for interactive cluster with 'zero' queue time

Continues work on documentation  
More outreach

Overall actions : restructure of documentation pages,  
continuous updates  
website update information for industry

# VSC User Survey Results 2024 – Training

Many specific suggestions show that the current training offer is not known enough.

## Additional trainings

- Workflows
- Domain specific trainings
- More short lunch-like sessions / short videos targeting different audiences

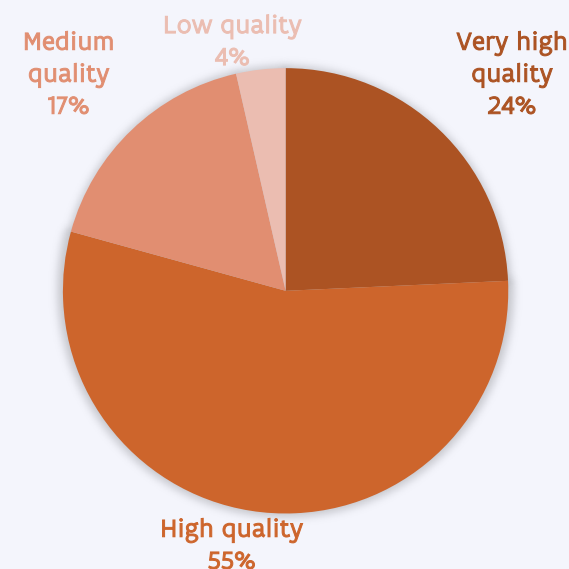
## New courses

- Scientific C
- MLOps-on-HPC
- Deploying-LLMs-locally
- GPU-offloading with OpenMP
- Heterogenous programming with Kokkos
- Workflows on HPC
- Best practices for data science on HPC

Fortran MOOC reactivated

VSC Software installations

## Course quality ratings



# VSC User Survey – overall remarks

- ✓ Check VSC-status page : <https://status.vscentrum.be/>
  - ✓ And possibly local university status pages
- ✓ Don't forget to use the search field in the documentation, a lot of issues were already described

# VSC User Survey – 2025 survey is active

- ✓ If not yet participated, there is still time:

